



SIZZ▲PP

App manual

SIZZAPP APP Manual

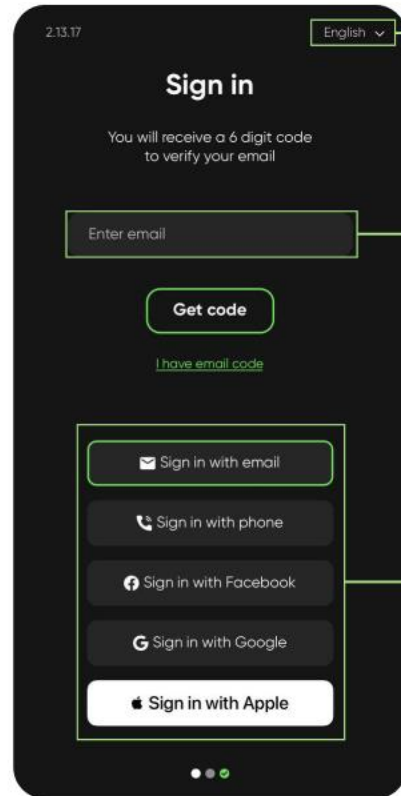
SIZZAPP is smart tracking and security system and reliable trip mate for your vehicle. It is compact, easy to install monitoring device without contract and monthly fees. Save and share your trips, track your vehicle location, protect it from thefts and receive notifications even if you are not around.

With the help of this document, you will learn everything about working with the SIZZAPP application, from how to register an account to all the features available in the application.

Table Of Content :

Registration	3	Settings	16-19
Main Menu	4	Settings Menu	16
Account	5	Organizer	17
Device Settings	6	Notifications (Silent Mode)	18
Map	7-13	Notifications	19
Trips	9	Remote Unit Configuration	20
Geofences	10-11	Rides	21-22
Eco-Drive	12	Statistics	23
Distance Today	13	Widgets	24
Share The Trip	14	FAQ & Terms And Conditions & Contact Form & Review	25-26
Speed	15		

Registration

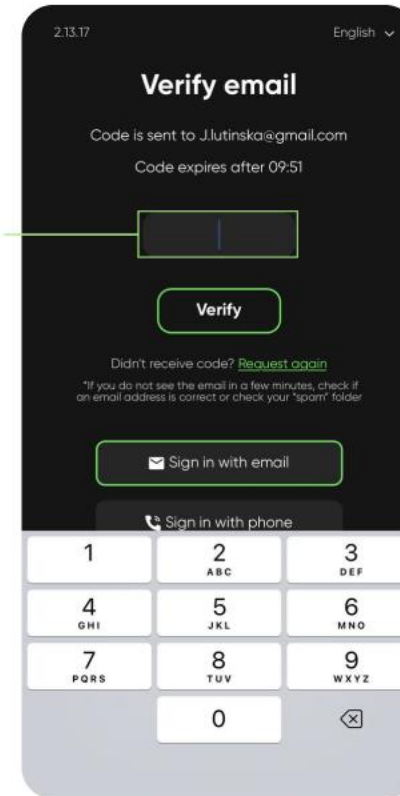


App language

Field for entering your email address

Authorization methods

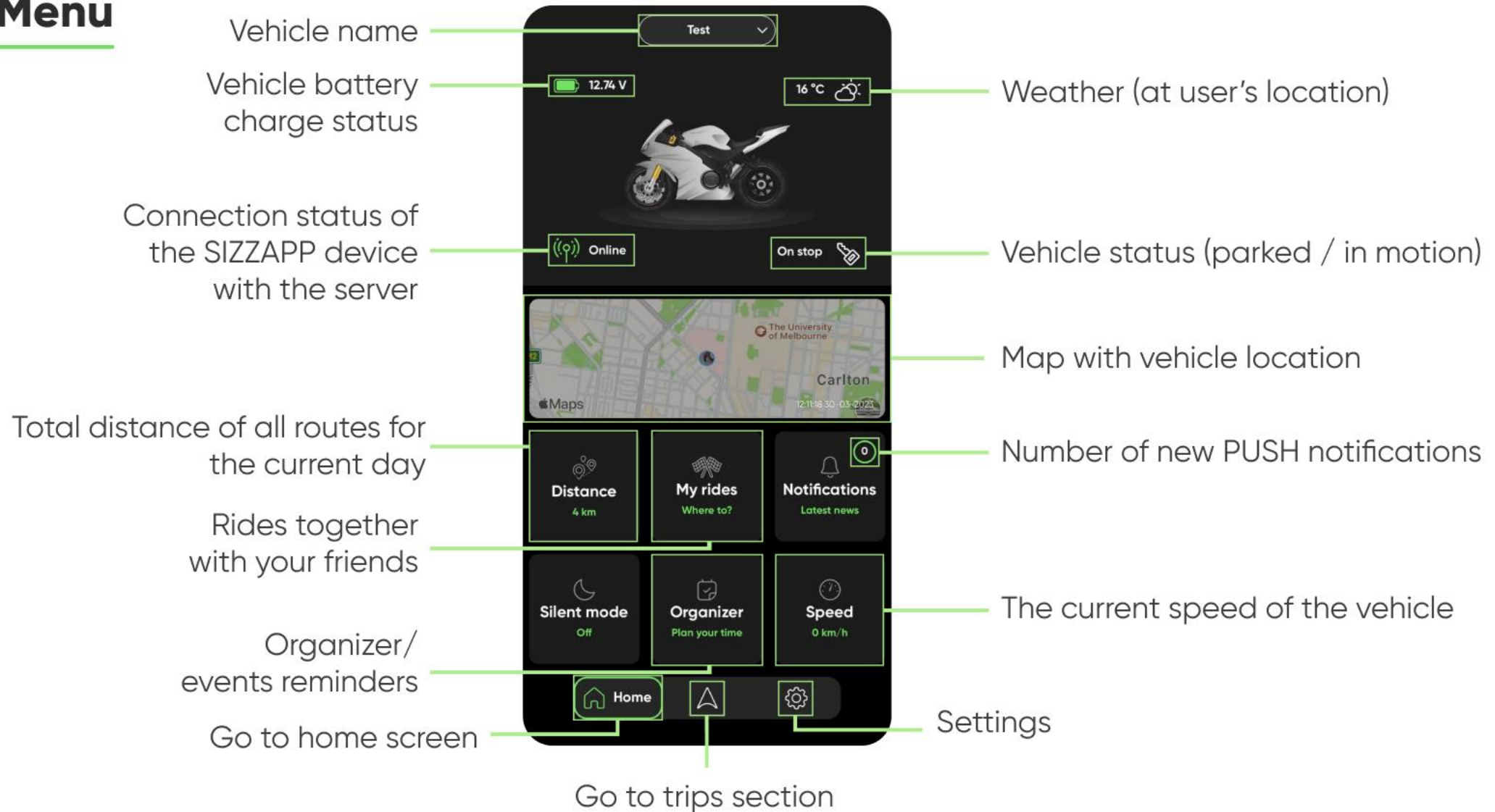
**Registration /
Authorization Screen**



Field for entering the code received via email

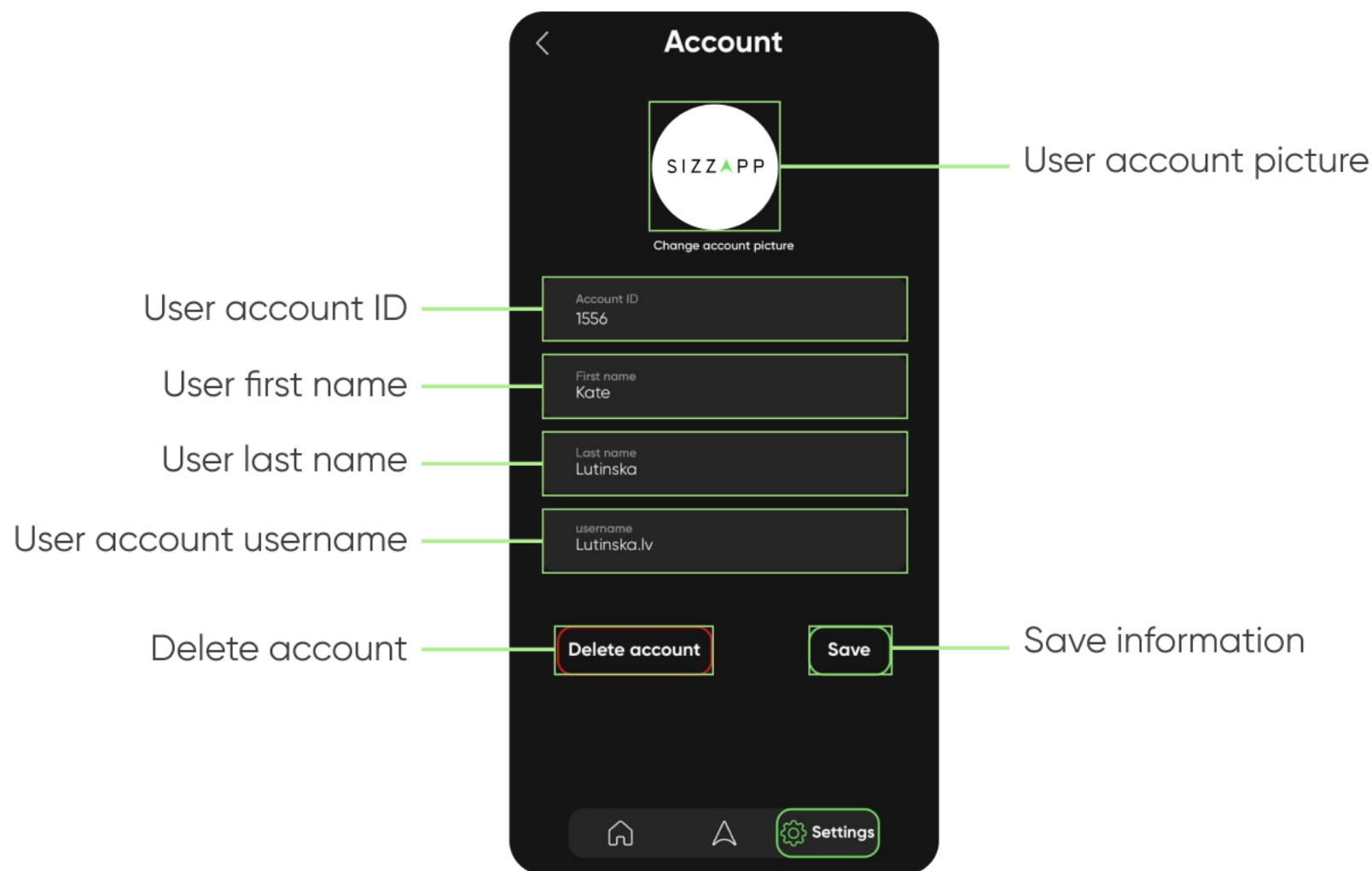
**Code Confirmation
Screen**

Main Menu



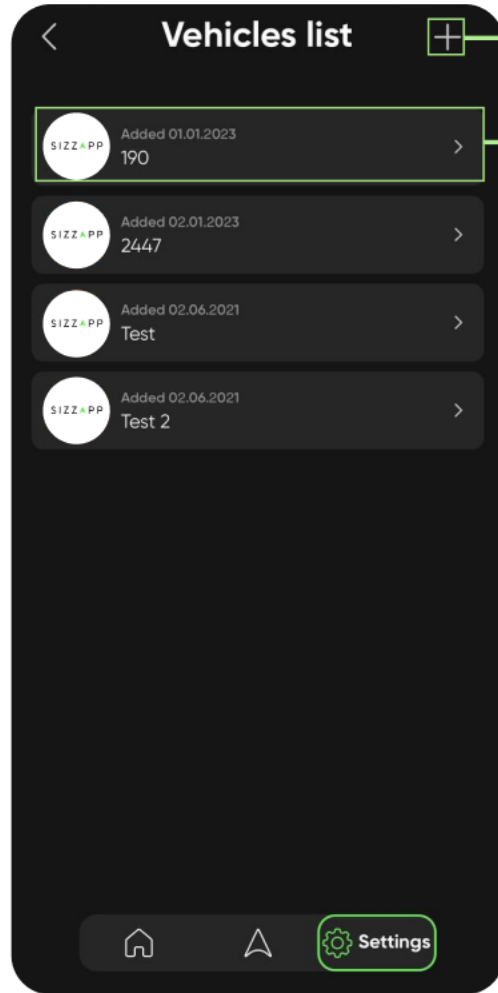
Main screen / Dashboard

Account



Account management screen

Device Settings



Vehicle list management screen

+

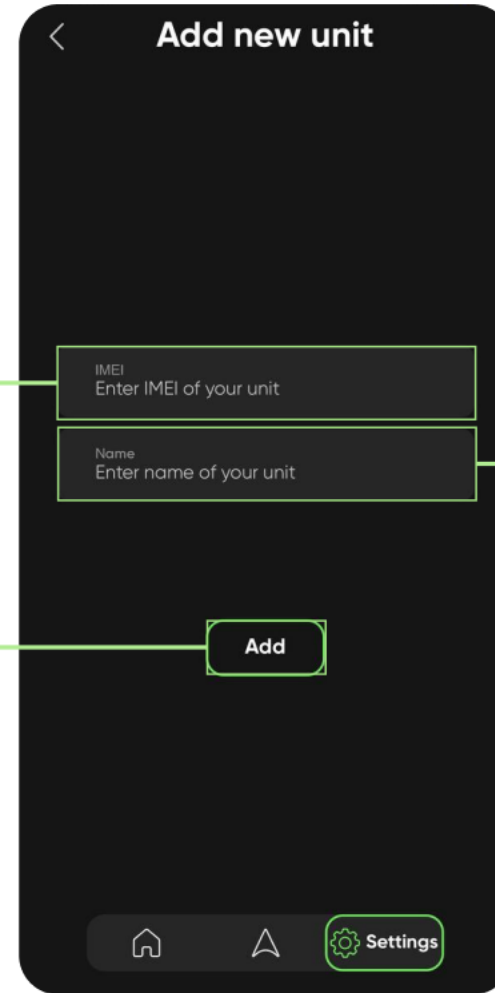
Add a new unit

>

Vehicle account settings

Field for entering the unique 15-digit device IMEI number

Add the unit



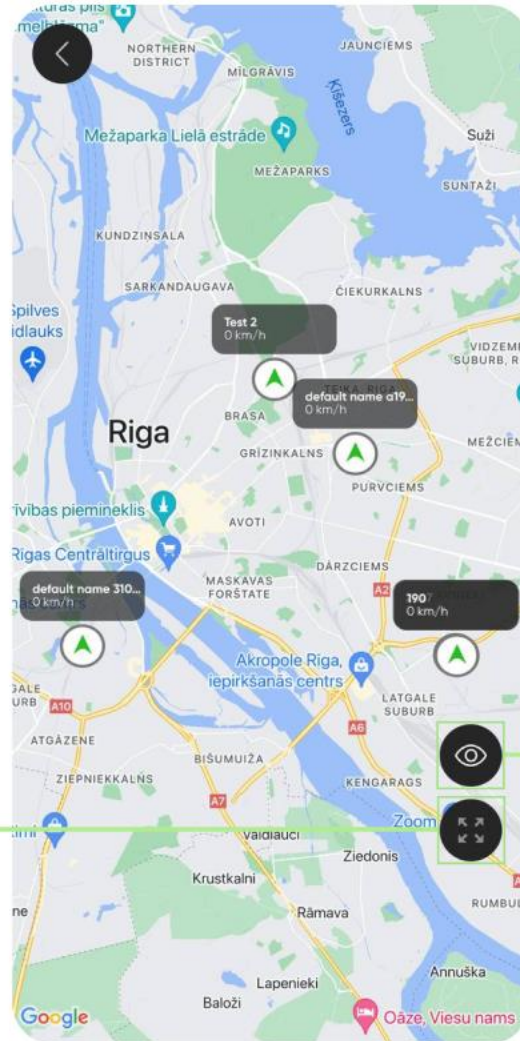
Adding new unit screen

Field for entering the unit's name

Add

Map

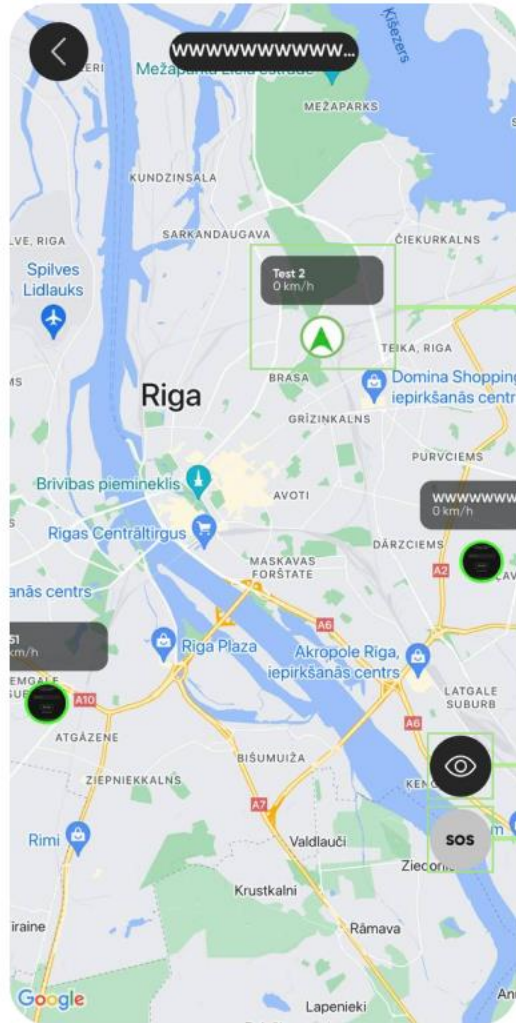
Autofit enable /disable
feature



Real-tracking of the vehicles
enable /disable feature

Vehicles on one map control screen

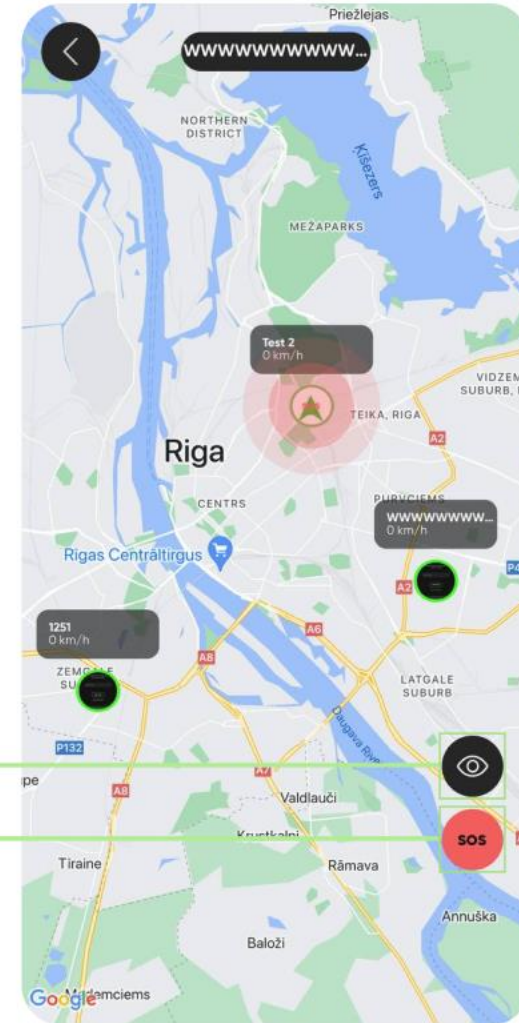
Map



Units' names and current speed

Real-tracking of the vehicles enable /disable feature

SOS feature enable/disable to send the members a notification that you need help

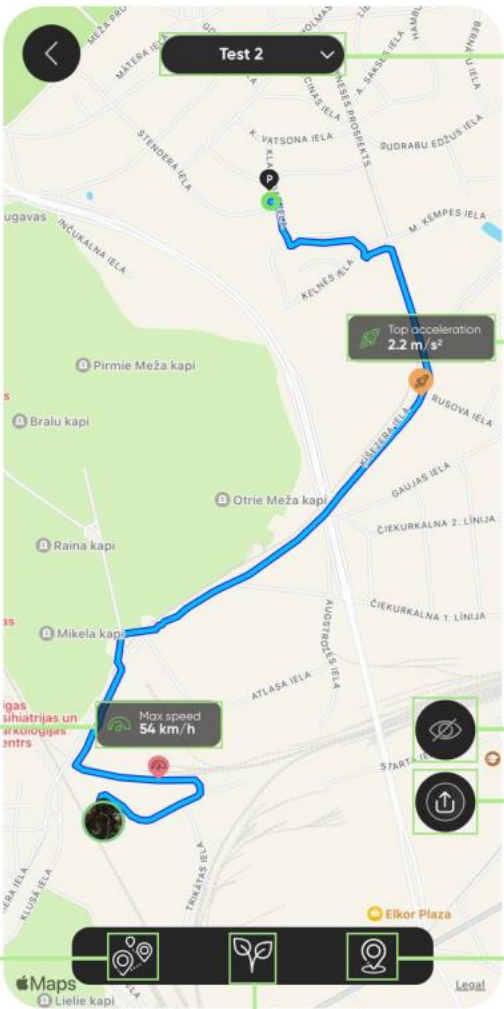


All the ride's member on one map screens

Map (Trips)

Maximum speed of the day

Trip sharing



Eco-drive feature

Trip screen

Vehicle name

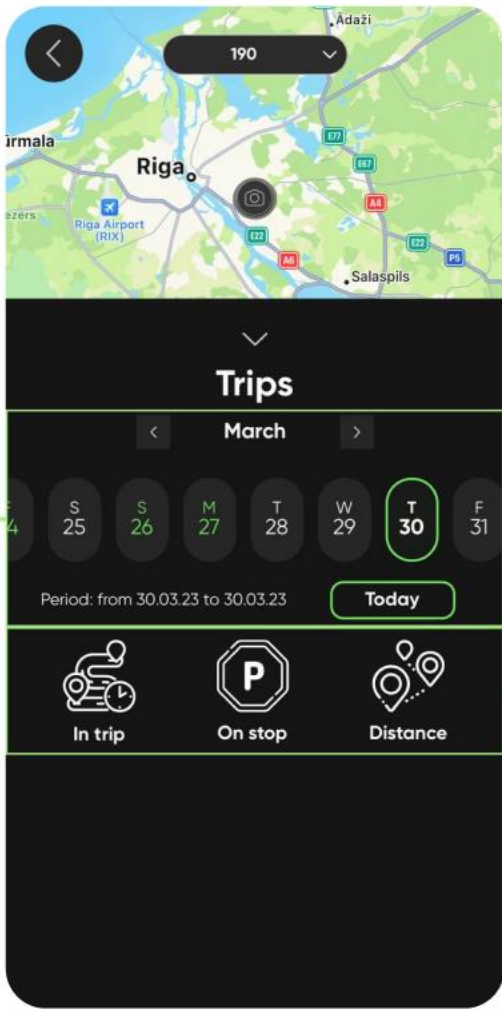
Maximum acceleration of the day

Selecting a period

Real-tracking of the vehicle enable / disable feature

Trip sharing

Geofence settings



List of routes and stops

Calendar and list of routes and stops screen

Map (Geofences)

See the geofence on map

To edit or delete a geofence click on the needed geofence and press Edit

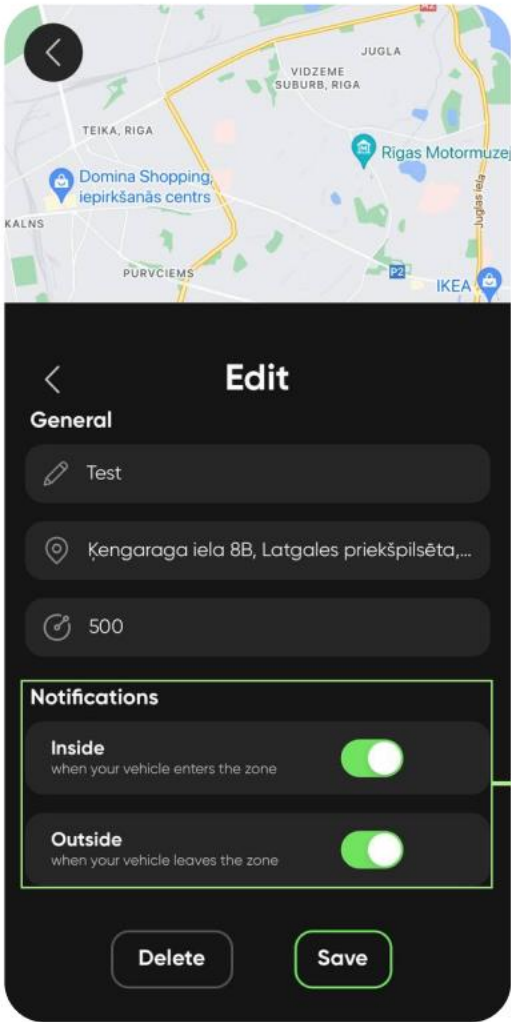


Creating a new geofence

Geofence settings



The list of all geofences



Geofence notifications settings

Geofence screens

Map (Geofences)

Geofence name entering
Entering the geofence
starting point
Entering the geofence radius

The screenshot shows a map of Riga, Latvia, with a black overlay titled "New geozone". Below the title are three input fields: "Enter geozone name" with a pencil icon, "Enter starting point" with a location pin icon, and a radius field showing "0" with a circular arrow icon. A "Continue" button is at the bottom.

The screenshot shows the same map and "New geozone" overlay, but with notification settings. Two toggle switches are visible: "Inside when your vehicle enters the zone" and "Outside when your vehicle leaves the zone", both of which are turned on. A "Save" button is at the bottom.

Setting the geofence
notifications when
entering / leaving the
zone

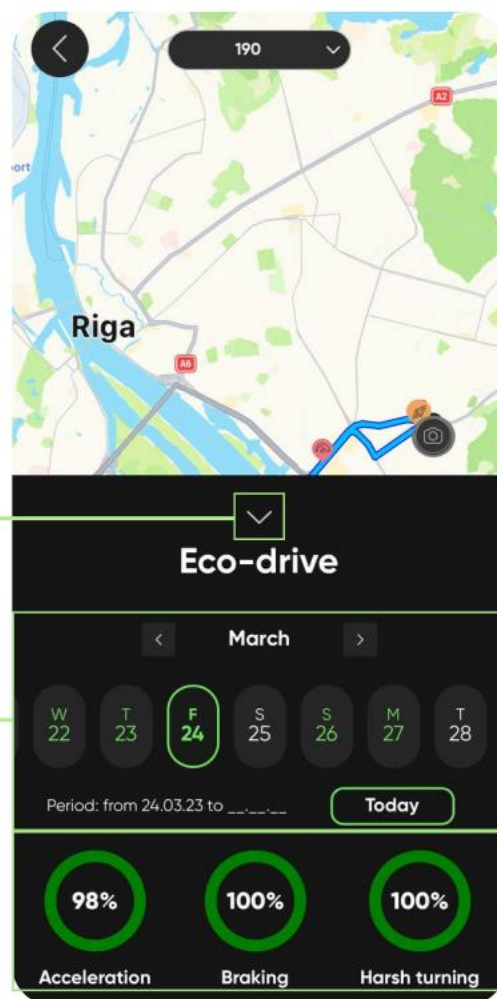
Confirmation

Creating a new geofence screen

Map (Eco-Drive)

Opening / closing
the list and calendar

Selecting a period

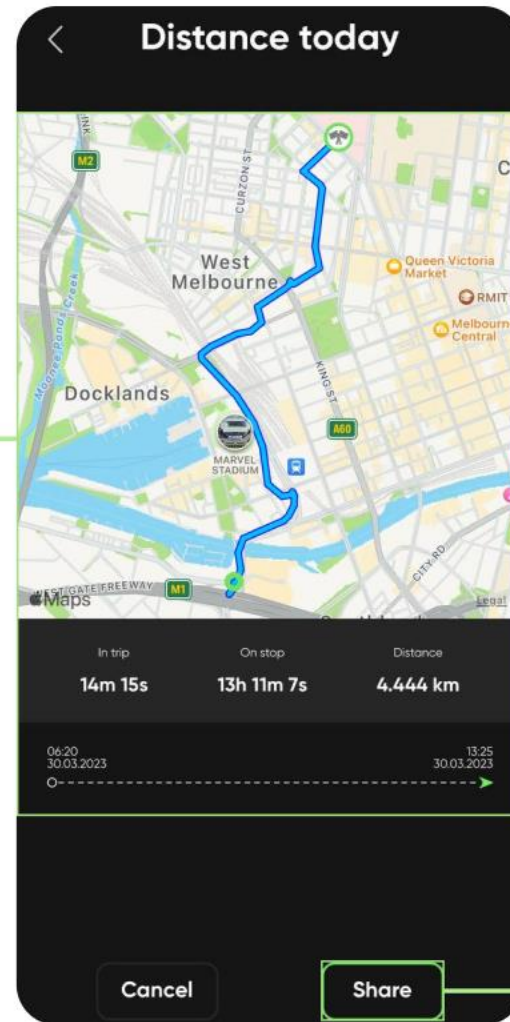


Showing a calculated score
in % based on driven distance
and event count of
acceleration, braking and
harsh turning

Eco-drive / Driving style screen

Map (Distance Today)

Total distance of all routes
of the current day

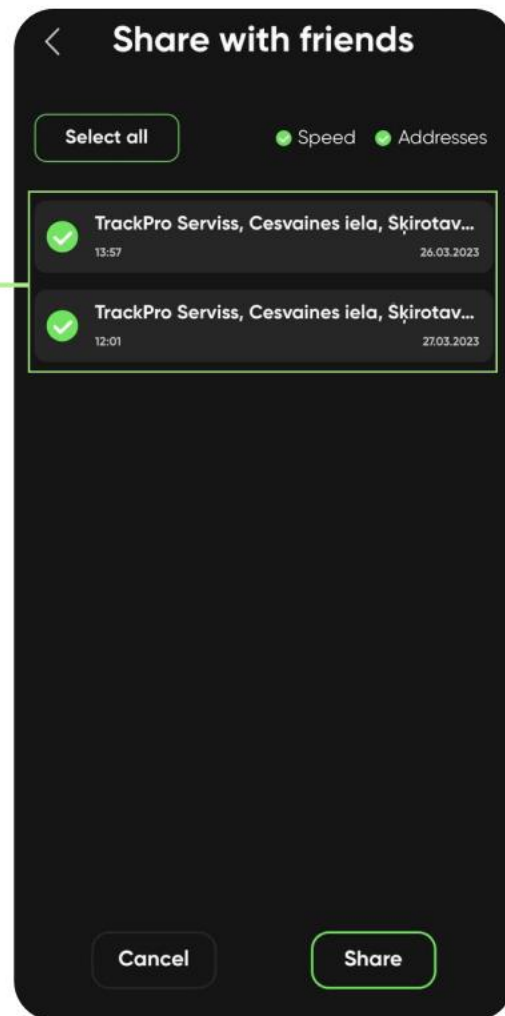


Sharing the distance today screen

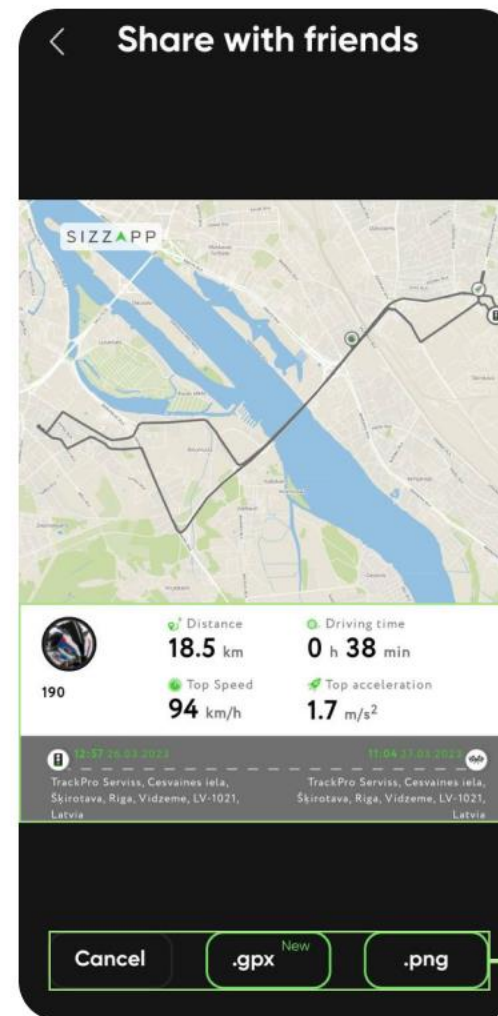
Distance today screen

Share The Trip

Selection of desired trips



Share the trip screen

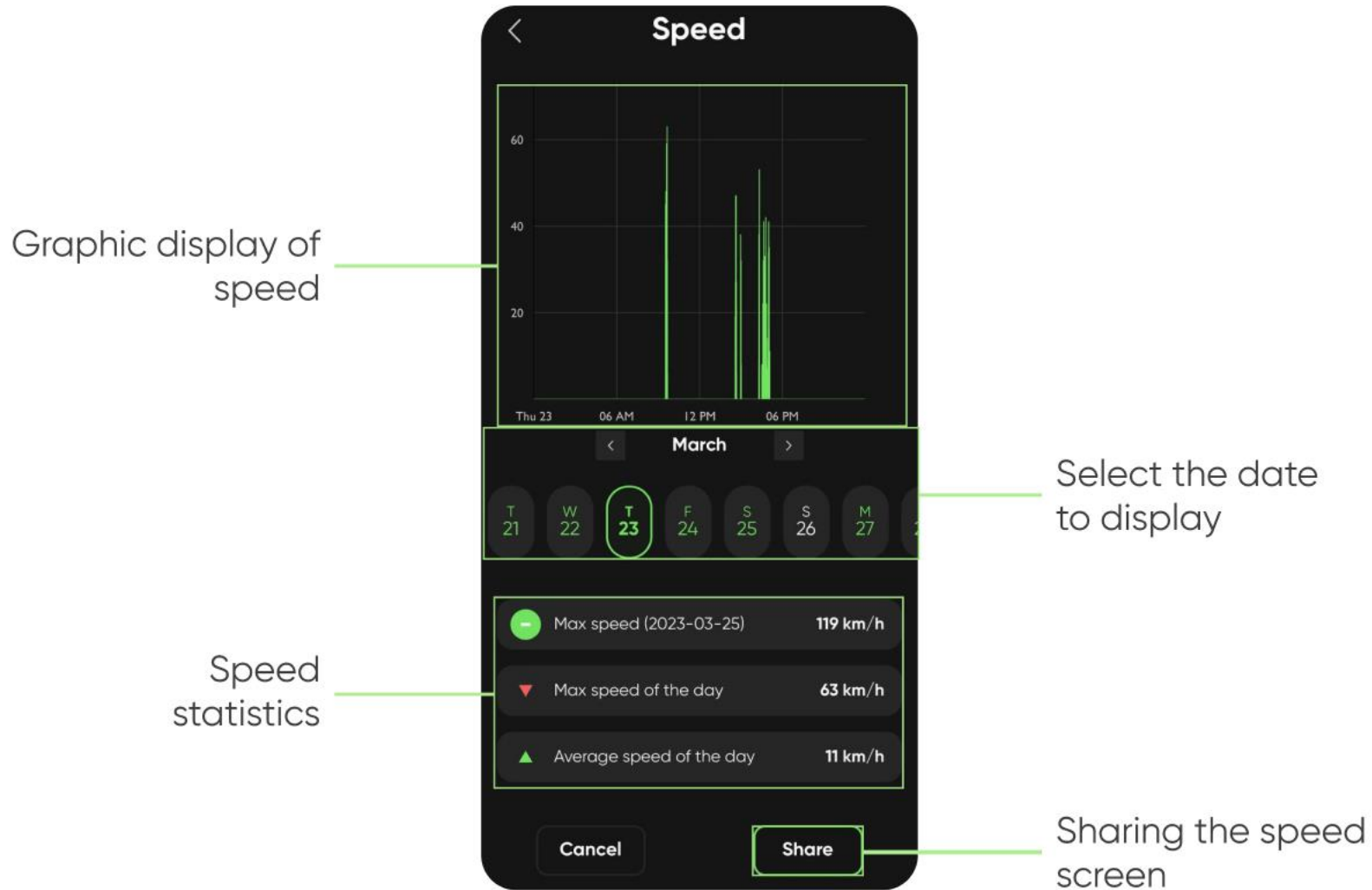


Speed and address displays

Cancellation /
Sharing in the
GPX or PNG

Share the trip screen
Step 2

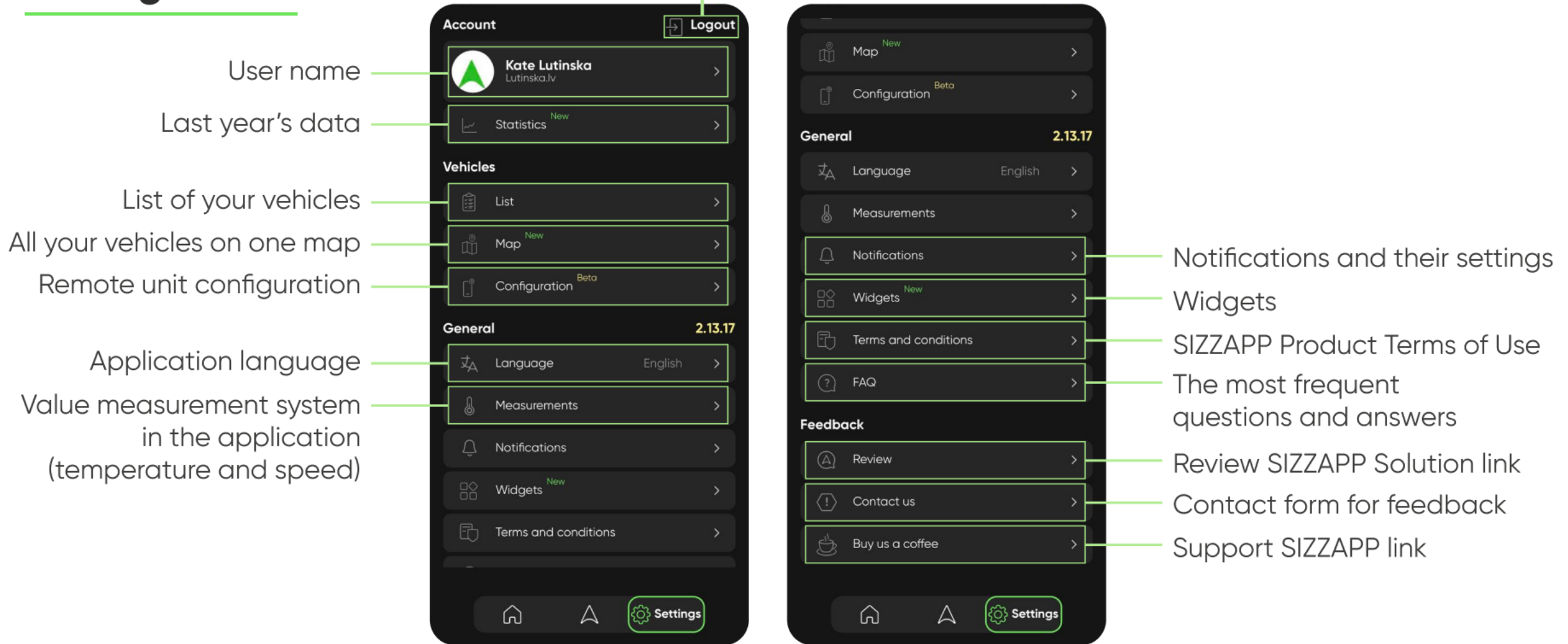
Speed



Detailed speed screen

Settings Menu

Signing out of the user account

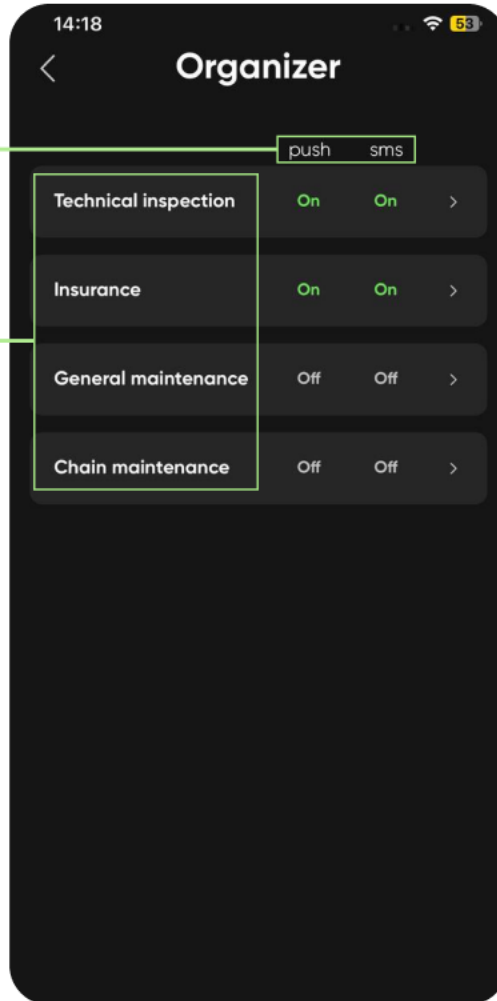


Application main settings screen

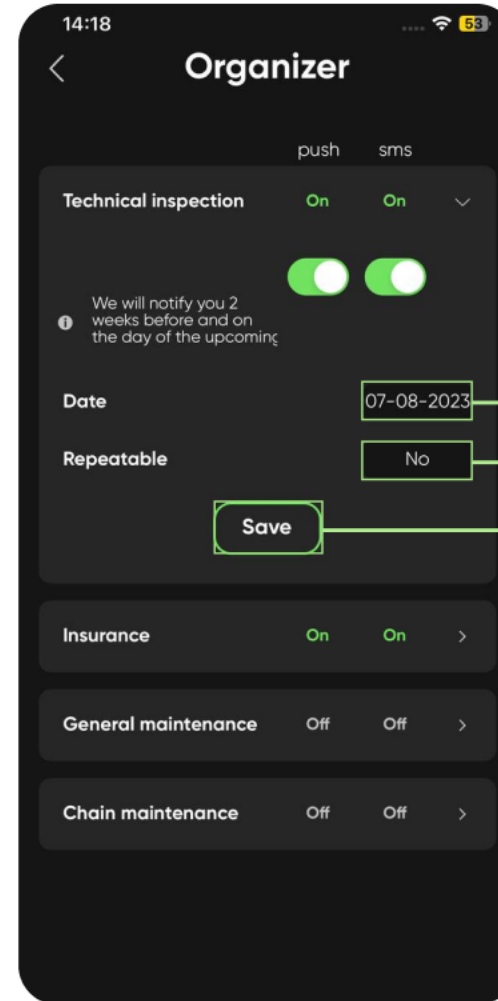
Organizer

Methods for receiving notifications

Available event types



Organizer settings screen



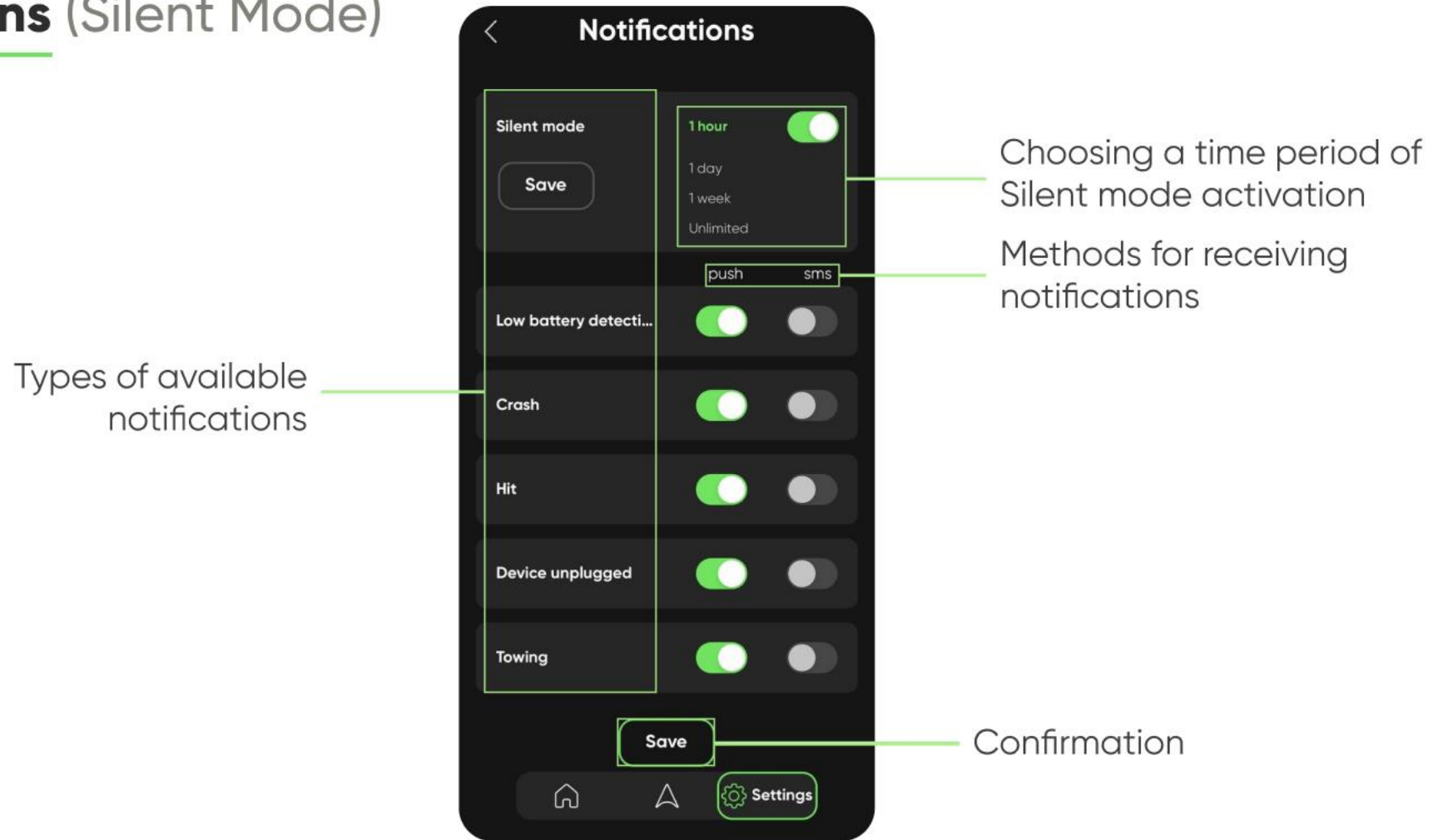
Technical inspection event screen

Scheduled date / Selecting a new date

Choosing a notification method

Confirmation

Notifications (Silent Mode)



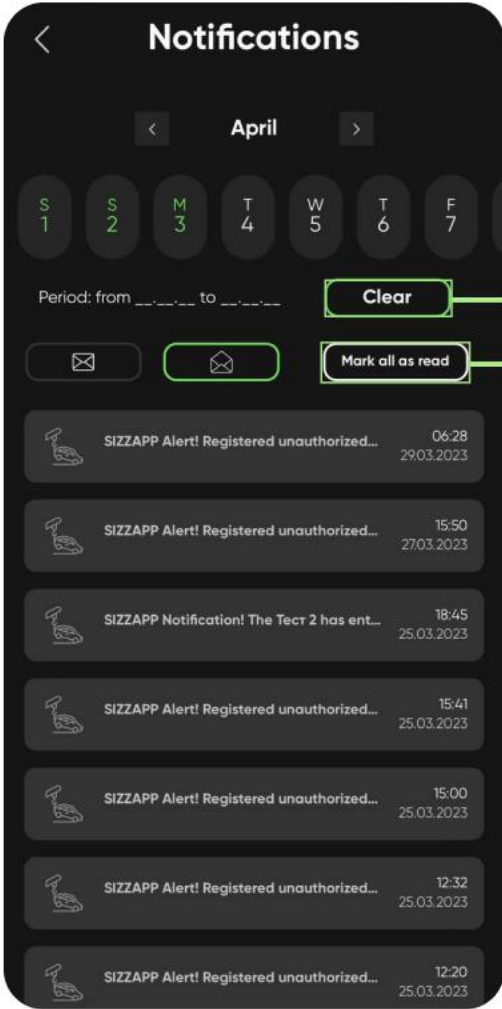
Notification settings screen

Notifications

Selecting date range

Unread notifications

Read notifications



Clear the date range

Mark all shown notifications as read

Notifications screens

Remote Unit Configuration

Available configuration event types

Remote unit configuration screen

<

Configuration

Towing detection

Activation timeout (min) ⓘ

1

0 1 2 3 4 5 6 7 8 9 10

Event timeout (s) ⓘ

8

0 3 6 9 12 15 18 21 24 27 30

Acceleration (g) ⓘ

0.18

0.1 0.15 0.2 0.25 0.3 0.35 0.4 0.45 0.5 0.55 0.6

Angle (deg) ⓘ

12

0 2 4 6 8 10 12 14 16 18 20

Duration (s) ⓘ

1

0.1 0.2 0.3 0.4 0.5 0.6 0.7 0.8 0.9 1 1.1

Crash / Hit detection

Duration (s) ⓘ

0.1

0.05 0.1 0.15 0.2 0.25 0.3 0.35 0.4 0.45 0.5

<

Configuration

Duration (s) ⓘ

1

0.1 0.2 0.3 0.4 0.5 0.6 0.7 0.8 0.9 1 1.1

Crash / Hit detection

Duration (s) ⓘ

0.1

0.05 0.1 0.15 0.2 0.25 0.3 0.35 0.4 0.45 0.5

Acceleration (g) ⓘ

5

1.5 2 2.5 3 3.5 4 4.5 5 5.5 6

Low battery detection

External voltage (v) ⓘ

11.8

12 12.1 12.2 12.3 12.4 12.5 12.6 12.7 12.8 12.9 13

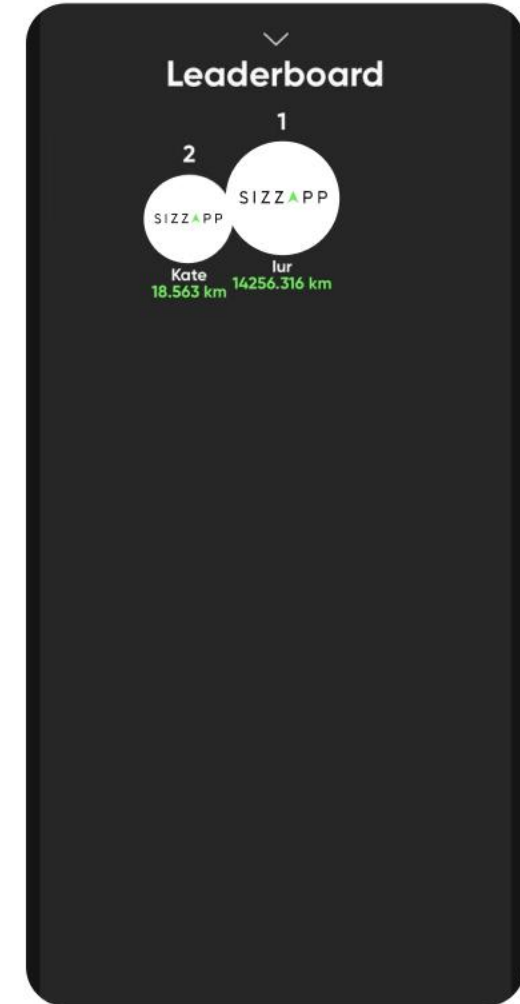
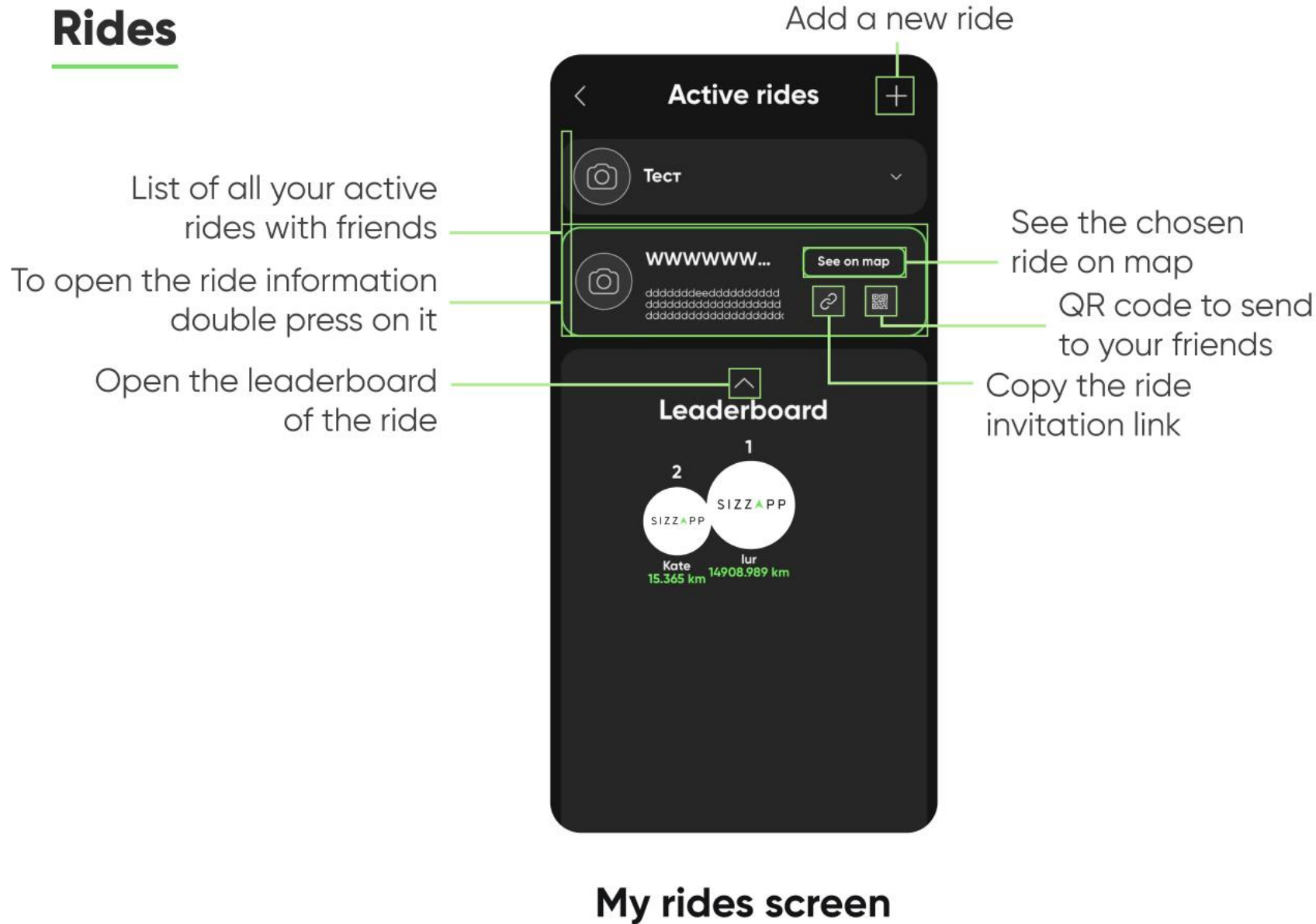
Reset to defaults

Set

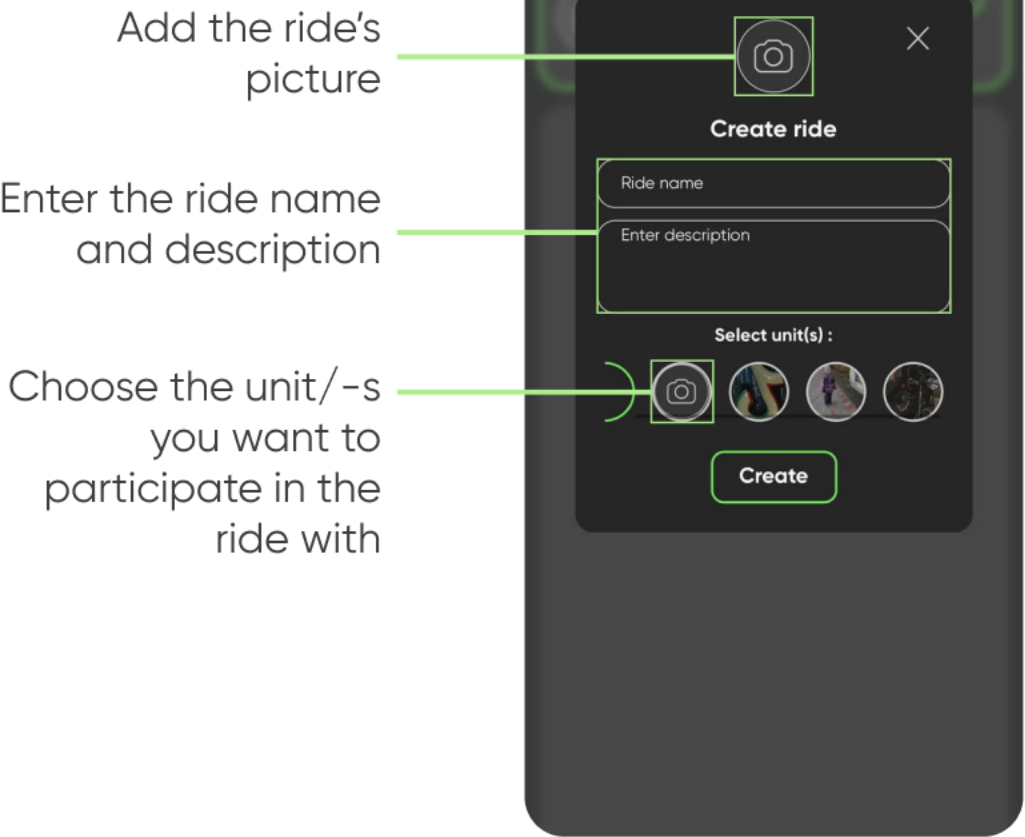
Setting the chosen values configuration option

Reset to default configuration option

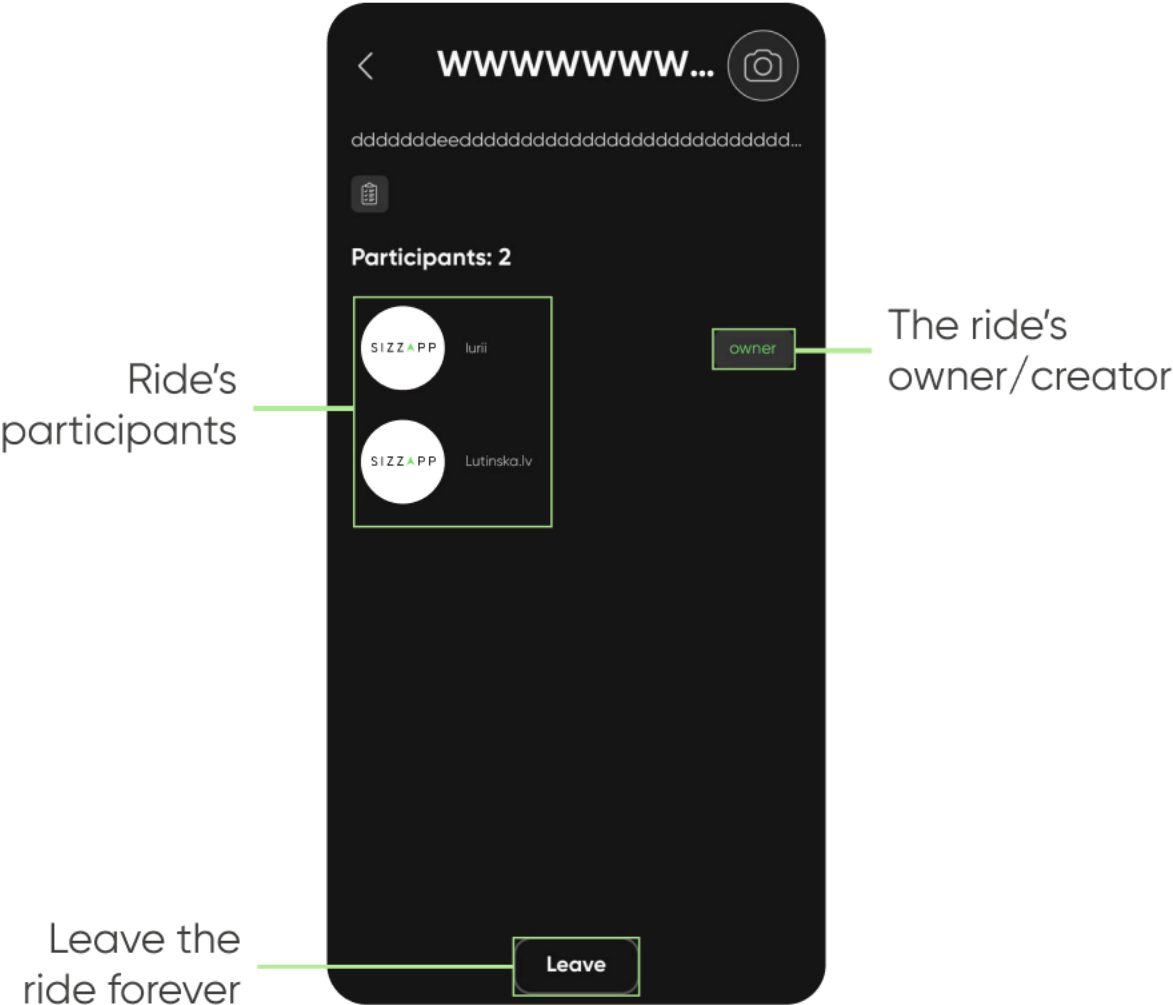
Rides



Rides



Create a new ride screen



Chosen ride's information screen

Statistics

All the events
and their
information

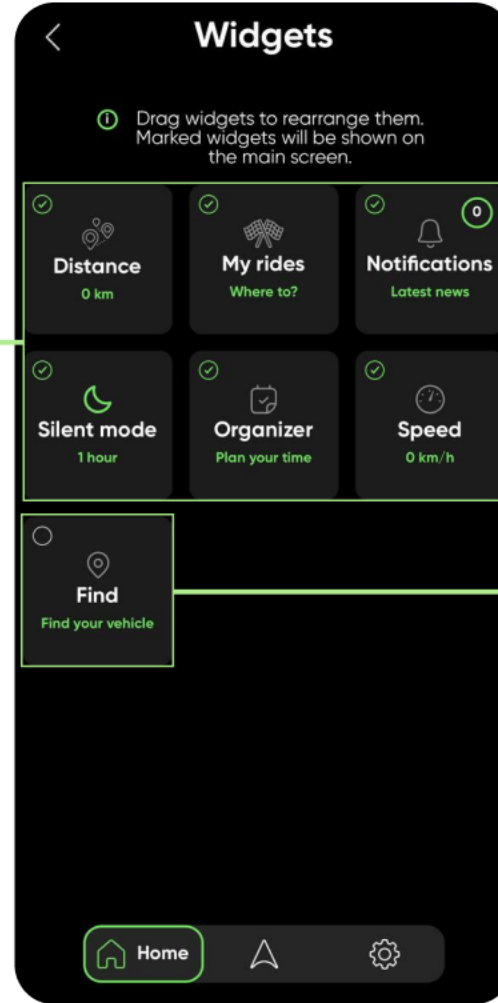


Sharing /
cancellation

Last year's detailed
statistics screen

Widgets

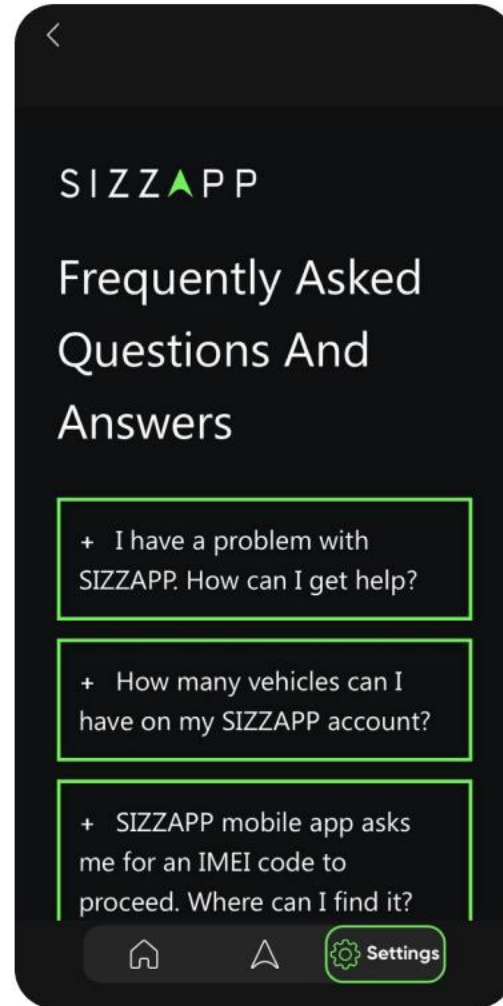
Shown on the main dashboard widgets



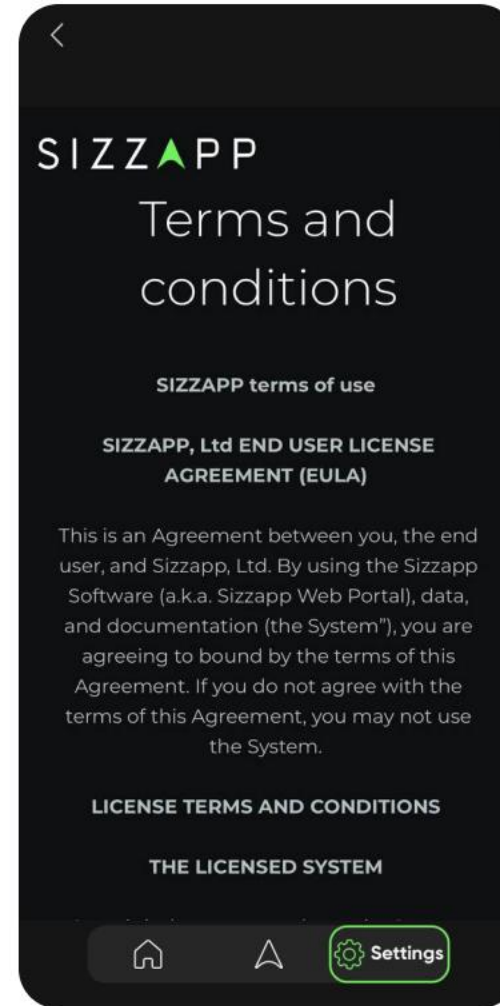
Not shown on the main dashboard widgets

Widgets setting screen

FAQ & Terms And Conditions

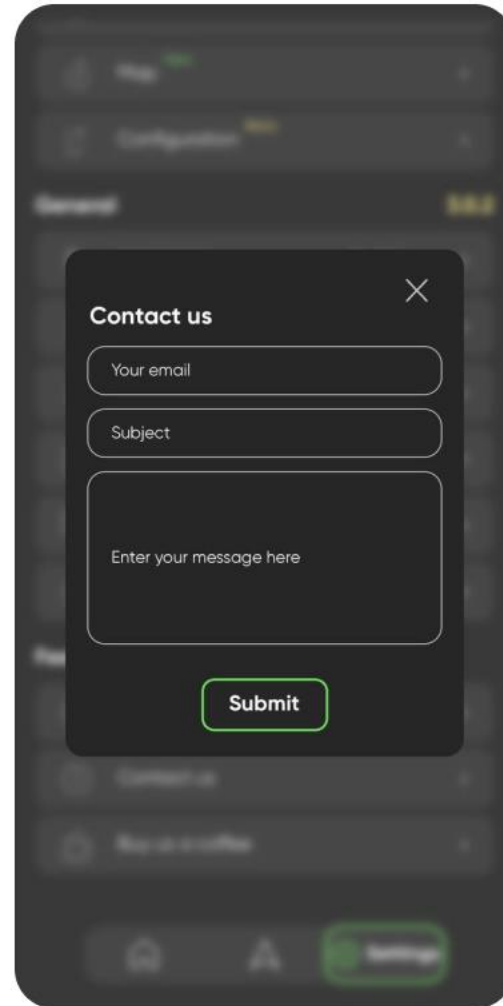


FAQ Screen



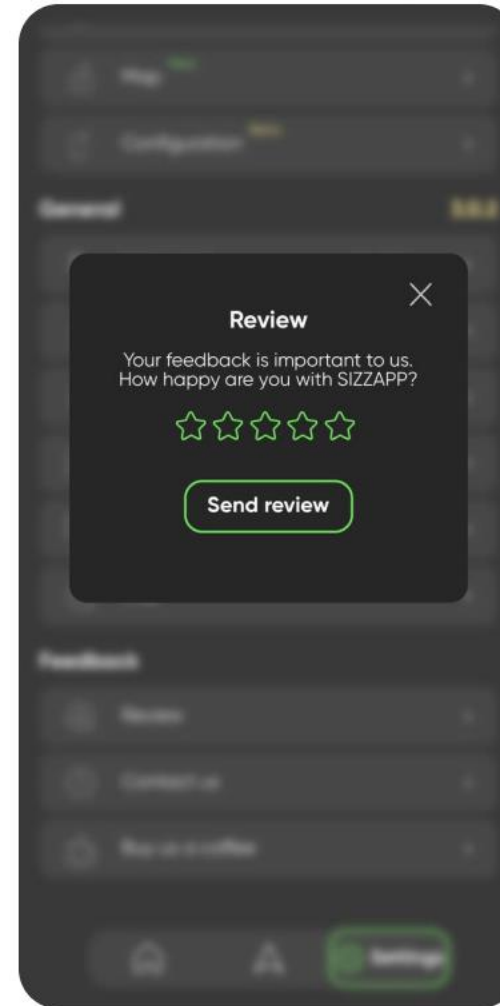
Product terms and
conditions screen

Contact Form & Review



A mobile app interface showing a 'Contact us' modal form. The form has a title 'Contact us' with a close button (X) in the top right corner. It contains three input fields: 'Your email', 'Subject', and a larger text area labeled 'Enter your message here'. A green 'Submit' button is at the bottom. The background is a blurred view of the app's main menu.

**Contact SIZZAPP
Team screen**



A mobile app interface showing a 'Review' modal form. The form has a title 'Review' with a close button (X) in the top right corner. It contains the text 'Your feedback is important to us. How happy are you with SIZZAPP?' followed by five green star icons. A green 'Send review' button is at the bottom. The background is a blurred view of the app's main menu.

**Review the SIZZAPP
Product screen**